

Tornado 90000™ PRODUCT PROFILE





The Tornado 90000 is TOPDON's newest cutting-edge smart charger, made for professional and commercial users.

This device is suitable for all types of 12V and 24V lead-acid batteries, with a wide battery capacity range from 5 to 90 amps.

The Tornado 90000 features a current/voltage edit function and supplies users with the needed protection for batteries through its 9-step smart charging method and 6 charging modes.

SUPPLY Mode provides a stable DC output and can be used as a programming voltage stabilizer.

Specs

Input Voltage

100-130V or 200-240V

Adjustable Voltage

11-15.8V 22-31.6V

Charging Mode

12V/24V Mode:
SUPPLY/NORM/COLD/BOOST/REPLY/AGM

Applicable Batteries

20-2800Ah

AC Cable length

1.8m,
Input AWG18#

Clamp length

Positive AWG4#, 2.2m
Negative AWG4#, 2.2m

Protection rating

IP20
Fan cooled

TOPDON

Function



Programmable charging
Battery repair
Stable Power Supply

TOPDON

6 CHARGING MODES, ADJUSTABLE CURRENT AND VOLTAGE

The Tornado 90000 offers 6 programmable charging modes to ensure the right current and voltage output at all times. This device also features an electrical current edit, and voltage edit function. The voltage adjustment ranges from 11-15.8V, and 22-31.6V. Corresponding currents are 5 – 90A and 5 – 45A.



TOPDON

LARGE POWER BANK

The Tornado 90000 can act as a stable power supply for various automotive appliances such as tire inflators, car fridges, and more.



TOPDON

ECU PROGRAMMING VOLTAGE STABILIZER



ECU programming voltage stabilizer can match multiple brands and types of automotive systems.

TOPDON

UNMATCHED COMPATIBILITY



Charge a wide variety of 12V and 24V batteries, such as AGM, WET, GEL, MF, CAL, and EFB batteries. The Tornado 90000 is suitable for batteries between 5 and 90 amps.

9-STEP SMART CHARGING

TOPDOWN

- Diagnosis
- Desulphation
- Pre-charge
- Soft Start
- Bulk charge
- Absorption
- Analysis
- Recondition
- Maintain

Current(A)

Step

Voltage(V)



Its "9-step smart charging" provides strong protection to the battery and the automatic charging and disconnection system eliminates any risk of overcharging.



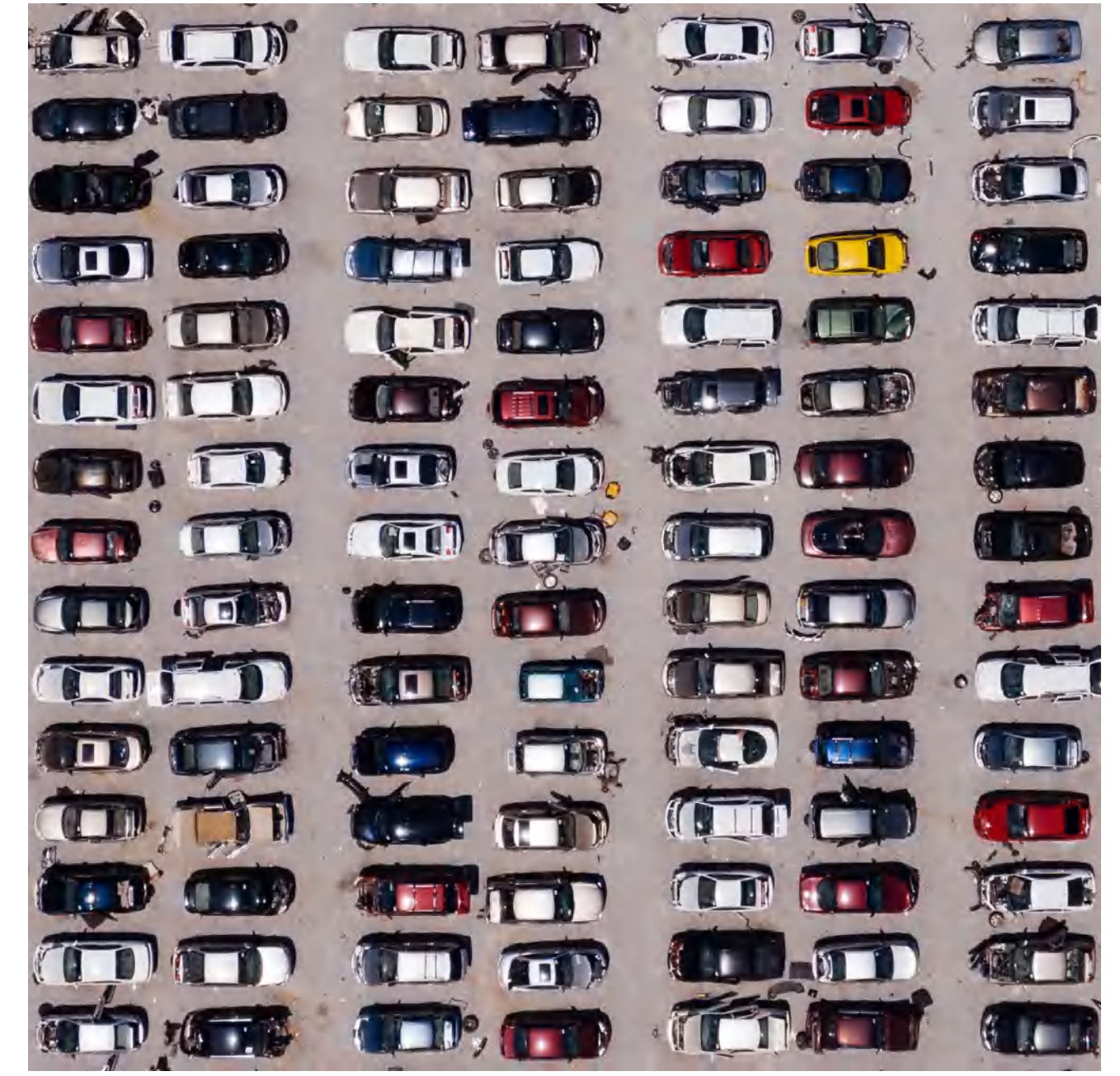
TOPDON YOUR BATTERY'S BODYGUARD

With the T90000 you are protected against reverse polarities, reverse charges, short circuits, overheating, and over-voltages.

TOPDON DUAL TEMPERATURE MONITORING FOR SAFETY IN EVERY ELEMENT

The T90000 features a built-in temperature sensor constantly protecting the device being charged. It has a built-in temperature sensor to detect the temperature of the device at all times; External temperature sensing probe to monitor and protect the device being charged.

Professional Automotive Battery Charger



TOPDON

WHAT'S IN THE BOX?



Tornado 90000
User Manual
Battery Clamps

Specifications / Model	T4000 	TB8000 	Tornado 30000 	Tornado 90000 
Input Voltage	100—240V	100—240V	50—240V	US100-120V EU200-240V
Output Current	12V4A	12V8A 6V8A 12V3A	12V30A 24V15A 6V15A 12V10A	12V10—90A 24V10—45A
Power	64W	108W	360W	1500W
Charging Mode	12V4A(NORM/LI/COLD) 6V4A(NORM) 12V1.5A (Small NORM/Small Cold)	12V8A(NORM/LI/COLD) 12V8A(REP) 6V8A(NORM) 12V3A(Small NORM)	12V30A(NORM/LI/REP) 24V15A(NORM/COLD/LI/REP) 6V15A(NORM/REPAIR) SUPPLY 12V30A/24V15A 12V10A (NORM)	12V/24V Mode: SUP/NORM/COLD/BOOST/ REP/AGM
Applicable Batteries	15-120Ah	15-260Ah	50-1000Ah	20-2800Ah
Charging Method	9 Step Smart Charging	9 Step Smart Charging	9 Step Smart Charging	9 Step Smart Charging
Clamp Length	Positive AWG18#, SR1.9+Positive 0.6m Negative AWG18#, SR1.9+Positive0.6m	Positive AWG14#, SR1.4m+ Positive 0.4m Negative AWG14#, SR1.4m+ Positive 0.4m	Positive AWG10# , 2.2m Negative AWG10# , 2.2m	Positive AWG4# , 2.2m Negative AWG4# , 2.2m
Applicable Battery type	LI、 WET、 GEL、 MF、 CAL、 EFB、 AGM	LI、 WET、 GEL、 MF、 CAL、 EFB、 AGM	LI、 WET、 GEL、 MF、 CAL、 EFB、 AGM	Wet,Gel,MF,CAL,EFB,VRLA, EFB,AGM
Protection Rating	IP65 Natural cooling	IP65 Natural cooling	IP20 Fan cooled	IP20 Fan cooled

CONTACT US FOR MORE DETAILS

www.topdon.com
sales@topcon.com
Social Media: @topdonofficial

+1-833-629-4832(North America)
+86-755-21612590

CHINA TOPDON HQ

Unit 2005 20/F, No.3040 Xinghai Avenue,
Qianhai Shimao Tower, Qianhai Shenzhen-Hongkong
Cooperation Zone, Shenzhen, PR, China 518000

USA TOPDON HQ

400 Commons Way, Suite A
Rockaway, NJ 07856

